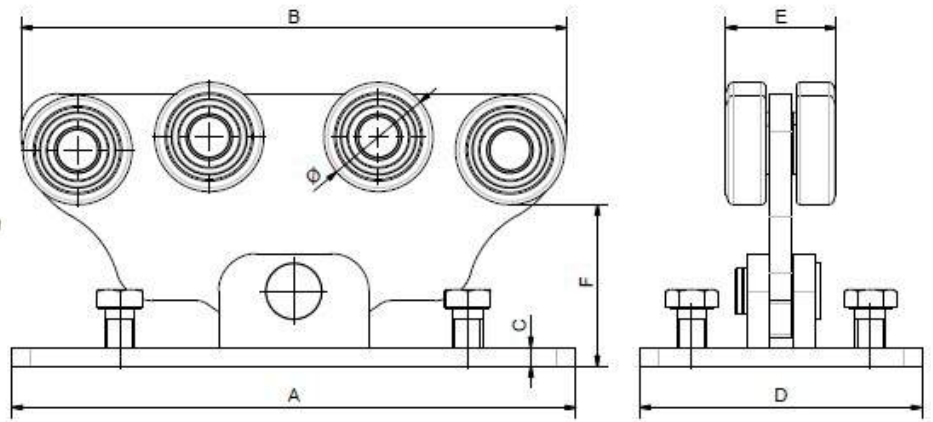


Single small or large cantilever gate carriage



Technical features:

The carriage is built by assembling:

- n°1 varnished plate with 2 steel brackets (UNI 7070/72) to fix on the floor.
Composition of the plate:
 - n°4 galvanized hex screws UNI 5739
 - n°1 varnished steel plate Fe37 (UNI 7070/72) perpendicular to the base plate, equipped with:
 - n°8 galvanized C40 steel wheels, each containing one 100Cr6 double plastic shielding ball bearing (mod 6201, mod 6203, mod 6305 respectively according to item)
 - n°8 hot rolled galvanized steel spacers (11SMn30 or C45 steel)
 - n°4 galvanized steel pins (11SMn30 or C45 steel)
 - n°1 galvanized C40 steel bolt to connect the brackets, and a plastic seager (UNI 7435)

Dimensions:

Art.	A (mm)	B (mm)	C (mm)	D (mm)	E (mm)	F (mm)	Ø (mm)	Weigth (kg)	Load Capacity (kg)**	Packg.
850/1	200	200	10	130	44,7	75	44	4,650	350	2
850/2	300	300	10	150	58,6	80	58	9,360	600	2
850/3	400	390	10	200	66,6	105	88	20,170	1200	2

***Load capacity is intended for use with the Nova-Ferr kit of accessories for Cantilever system*

The quality management system of NOVA-FERR srl complies with the requirements of the standard for quality management systems.

Description:

This carriage was specifically designed for freestanding cantilever system, whose advantages are the following:

- reduction of maintenance costs in the long time, if compared to a traditional floor track, with subsequent elimination of problems caused by the passage of vehicles on it.
- no danger of crushing feet under the wheels.
- This sliding system is ideal in the northern regions where snow and ice may cause obstruction on traditional floor tracks with wheels.
- it is possible to install the gate on uneven floor
- No debris under it

The position of the wheels ensures excellent sliding of the gate, the misalignment of the wheel units allows the gate to remain always in line with the floor.

The bolts on the base will adjust the height of the carriages and therefore to reduce if necessary any vertical deviation of the gate during opening or closing.

The quality management system of NOVA-FERR srl complies with the requirements of the standard for quality management systems.

