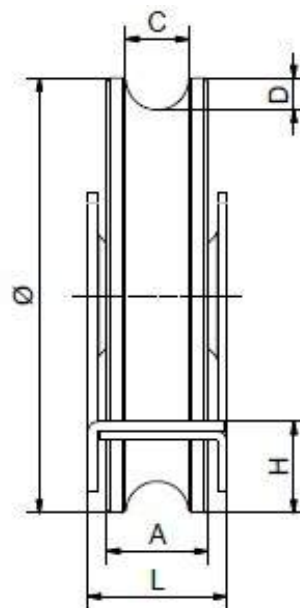


Art. 121

Galvanized steel wheel with closed bracket, 0 groove, 2 ball bearings



Technical features:

The wheel is built by assembling:

n° 1 galvanized wheel body made from 11SMn30 or C45 steel, turned on a CNC lathe.

n° 2 nylon double-shielded ball bearing 6203-2RS ($\varnothing 80\text{-}\varnothing 140$) or 6204-2RS ($\varnothing 160$), made from 100Cr6 steel

n° 2 galvanized closed brackets made from DD13 steel coil

n° 1 galvanized pin $\varnothing 17$ or $\varnothing 20$ (for ball bearing 6204-2RS) made from rough drawn wire

Dimensions:

Art.	Ø (mm)	A (mm)	C (mm)	D (mm)	H (mm)	L (mm)	THK (mm)	Weight (kg)	Load capacity (kg)	Packg
121/8/25/2	80	26	20	10	22.5	33	25/10	0,800	600	8
121/9/25/2	90	26	20	10	22.5	33	25/10	1,000	600	8
121/10/25/2	100	26	20	10	22.5	33	25/10	1,300	600	8
121/10/32/2	100	32	20	10	22.5	44	25/10	1,640	600	8
121/12/32/2	120	32	20	10	27.5	44	30/10	2,600	600	6
121/14/32/2	140	32	20	10	27.5	44	30/10	3,490	600	4
121/16/32/2	160	32	20	10	27.5	44	30/10	4,550	600	4

The load capacity is for pair of wheels

The quality management system of NOVA-FERR srl complies with the requirements of the standard for quality management systems.



NOVA-FERR S.r.l.
Accessori per serramenti e
portoni industriali

www.novaferr.com

La garanzia del
PRODOTTO made in ITALY



Description:

The wheels are used to slide any iron support that needs to be rolled on profile guides to be cemented or screwed (refer to the items of Nova-Ferr General Catalog, WHEEL section). The peculiar O shape of the wheel's groove has been specially designed to reduce its own wear as well as the exhaustion of the track guide on which it rides and to make the slip more effective and linear.

The quality management system of NOVA-FERR srl complies with the requirements of the standard for quality management systems.



NOVA-FERR S.r.l.
Accessori per serramenti e
portoni industriali

www.novaferr.com

La garanzia del
PRODOTTO made in **ITALY**

