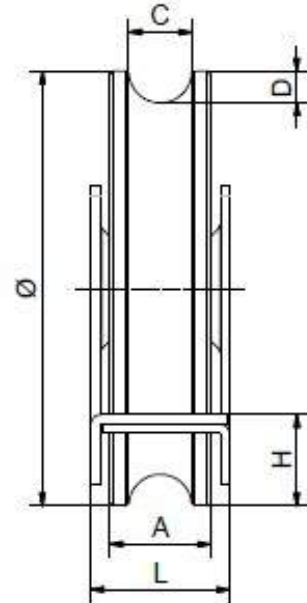


Art. 121

Galvanized steel wheel with closed bracket, 0 groove, 1 ball bearing



Technical features:

The wheel is built by assembling:

n° 1 galvanized wheel body made from 11SMn30 or C45 steel, turned on a CNC lathe.

n° 1 nylon double-shielded ball bearing 6203-2RS, made from 100Cr6 steel

n° 2 galvanized closed brackets made from DD13 steel pickled coils

n° 1 galvanized Ø17 or Ø20 pin (for ball bearing 6204-2RS) made from rough drawn wire.

Dimensions:

Art.	Ø (mm)	A (mm)	C (mm)	D (mm)	H (mm)	L ((mm)	Weight (kg)	Load Capacity (kg)	Pakg
121/7/20	70	20	16	8	17.5	32	0,530	400	12
121/8/20	80	20	16	8	22.5	32	0,690	400	12
121/9/20	90	20	16	8	17.5	32	0,860	400	12
121/10/20	100	20	16	8	22.5	32	1,070	400	12
121/12/20	120	20	16	8	27.5	32	1,748	400	8
121/14/20	140	20	16	8	27.5	32	2,238	400	6
121/16/20	160	20	16	8	27.5	32	3,028	400	4
121/8/25	80	25	20	10	22.5	32	0,730	400	12
121/10/25	100	25	20	10	22.5	32	1,170	400	12

The quality management system of NOVA-FERR srl complies with the requirements of the standard for quality management systems.



Art.	Ø (mm)	A (mm)	C (mm)	D (mm)	H (mm)	L ((mm)	Weight (kg)	Load Capacity (kg)	Pakg
121/12/25	120	25	20	10	27.5	32	1.970	400	6
121/14/25	140	25	20	10	27.5	32	2.650	400	6
121/16/25	160	25	20	10	27.5	32	3.500	400	4

The load capacity is for pair of wheels

Description:

The wheels are used to slide any iron system that needs to be rolled on profile guides to be embedded into concrete or screwed (refer to the items of Nova-Ferr General Catalog, WHEEL section). The peculiar O shape of the wheel's groove has been specially designed to reduce its own wear as well as the exhaustion of the guide track on which it rides and to make the slip more effective and linear.

The quality management system of NOVA-FERR srl complies with the requirements of the standard for quality management systems.



NOVA-FERR S.r.l.
Accessori per serramenti e
portoni industriali

www.novaferr.com

La garanzia del
PRODOTTO made in ITALY

