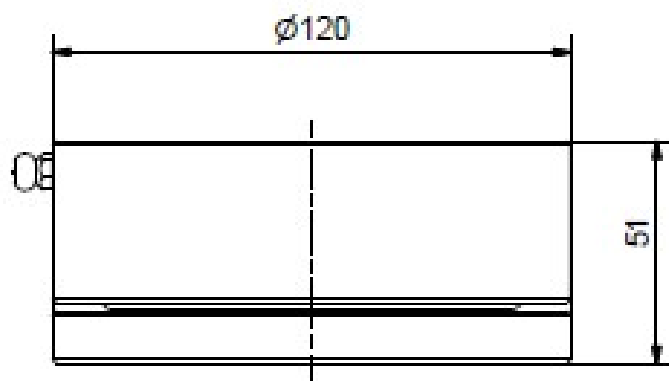


Art. 895/I

Galvanized steel pintle with tapered roller bearing, bottom part.



Technical features:

The pintle is built by assembling:

- n°1 galvanized Ø120 base turned from AVZ DIN 1651/88 steel
- n°1 thrust tapered roller bearing 30210 made from 100Cr6 steel
- n°1 rubber seal
- n°1 galvanized Ø6 greaser
- n°1 galvanized Ø120 cup turned from AVZ DIN 1651/88 steel

		Width of leaf (mm)									
		1500	2000	2500	3000	3500	4000	4500	5000	5500	6000
Height of leaf (mm)	1000	1600	1200	1000	800	700	600	550	500	450	400
	1500	2400	1600	1400	1200	1100	900	800	750	650	600
	2000	3200	2400	1800	1600	1400	1200	1100	1000	900	800
	2500	3600	3000	2400	2000	1750	1500	1350	1200	1100	1000
	3000	3800	3500	2800	2400	2100	1800	1600	1450	1350	1200

Load capacity is for pair of pintles (coupled with art. 895/S) in relation to size of gate, with load in the center of the gate opening.

The quality management system of NOVA-FERR srl complies with the requirements of the standard for quality management systems.



Dimensions:

Art.	Weight (kg)	Packg	Pack
170/l	0,980	5	10

Description:

This pintle is suited for any swing gate with one leaf or two leaves and its dimension allows small-medium load capacity.

This pintle is equipped with black plastic cover to preserve from weathering and has a greaser to lubricate the inner ball bearing.

It must be mounted in the bottom part of the gate.

The quality management system of NOVA-FERR srl complies with the requirements of the standard for quality management systems.



NOVA-FERR S.r.l.
Accessori per serramenti e
portoni industriali

www.novaferr.com

La garanzia del
PRODOTTO made in **ITALY**

